

An illustration of a diverse group of people walking together from left to right. The group includes a woman with a white cane, a person in a wheelchair, a man with a raised fist, and a woman with a megaphone. They are dressed in various colorful clothing, representing a wide range of ages, ethnicities, and abilities. The background is a solid blue color with some faint, stylized white lines.

Ending Violence Against Women & Girls The Coordinated Community Response in H&F

Annabel Moores

Our approach – the Coordinated Community Response

We recognise that real change in responding to and ending VAWG can only be achieved when all agencies, residents, and communities work effectively together.

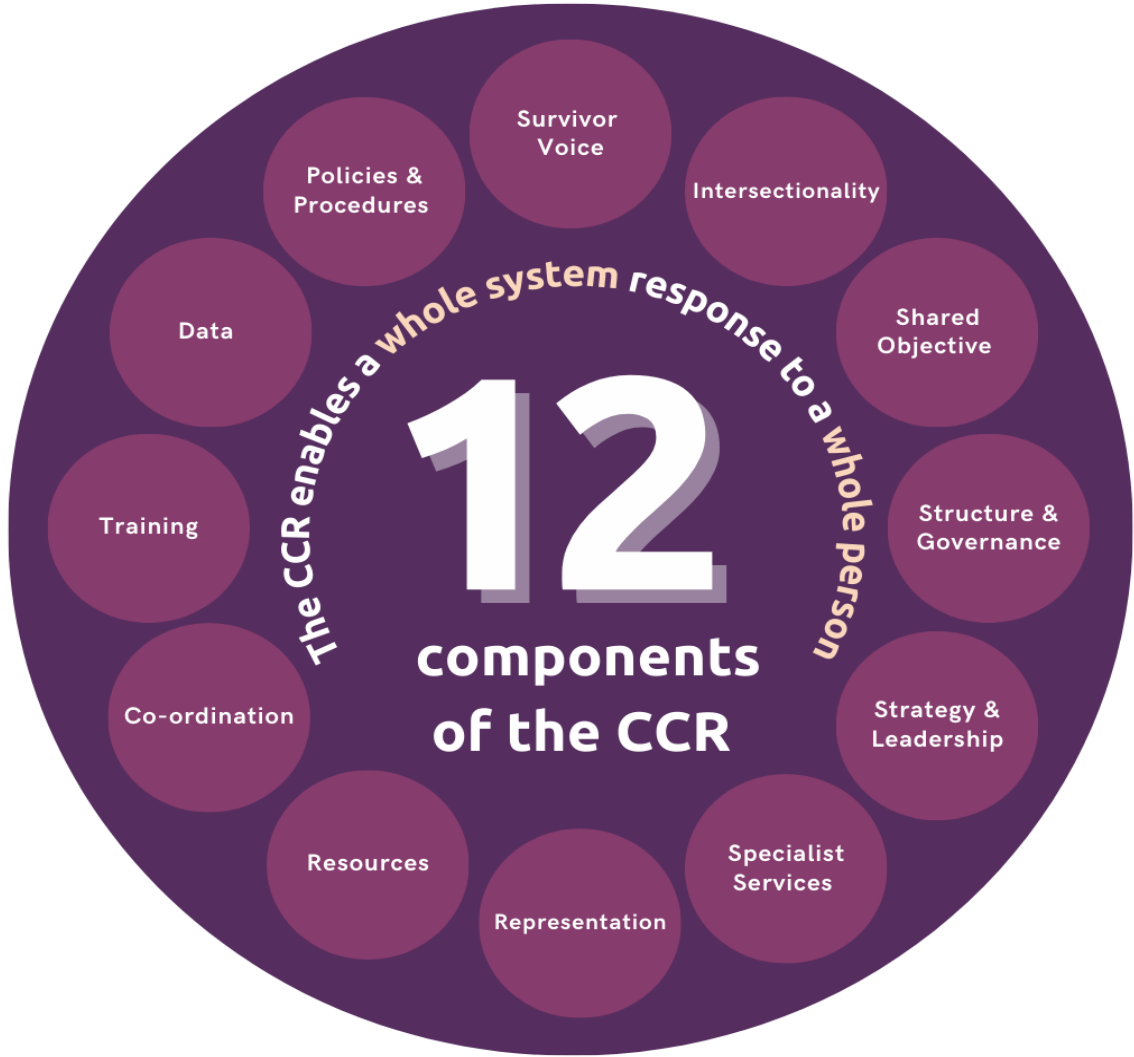
Ensuring everyone knows the role they play in responding to VAWG and how they work with each other is a process known as the Coordinated Community Response (CCR).

In 1997 H&F was the first borough in the UK to adopt the CCR. The CCR is championed nationally as a best practice example of a “whole system” response to a whole person. A whole system response has been adopted by the Government’s Tackling VAWG strategy 2021.

Local charity Standing Together Against Domestic Abuse are the VAWG sector experts on delivering the CCR, they provide international training on the model.

There are 12 components to the CCR – this visual aid demonstrates how we have embedded key components within our response to effectively implement the CCR in H&F.





Ending VAWG Strategy

Co-produced alongside Residents, Survivors and Key Stakeholders
Written with Standing Together Against Domestic Abuse

Survivor Voice

VAWG is prevented
Survivors are supported
Abusers are held to account
Collaboration to create change/Partnership working

Shared Objectives



Our Approach

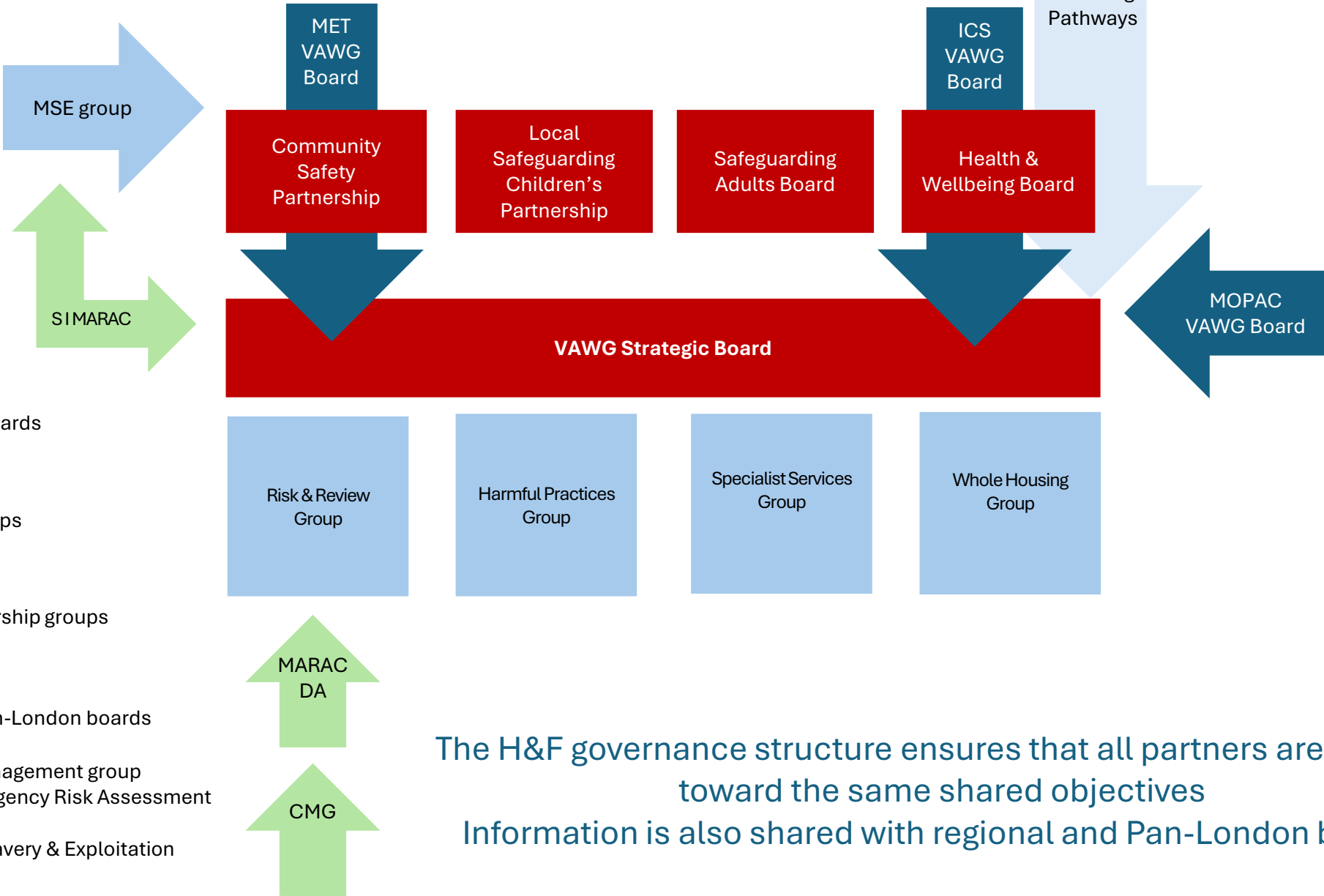
The Coordinated Community Response (CCR)
The Ecological Model
Evidence- based
Local data



The H&F strategy centres survivor voice and outlines the shared objectives across the H&F partnership



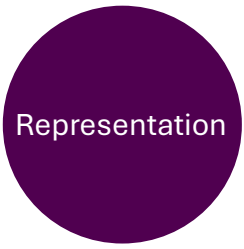
Governance Structure



-  H&F Strategic boards
-  Operational groups
-  MARACs/partnership groups
-  Regional and Pan-London boards

CMG – Court Management group
MARAC – Multi-agency Risk Assessment Conference
MSE – Modern Slavery & Exploitation
SI – Sex Industry

The H&F governance structure ensures that all partners are working toward the same shared objectives
Information is also shared with regional and Pan-London boards



VAWG Board Membership

Co-chaired by the Operational Director Children and Young Peoples Service
and Detective Chief Inspector MET police



H&F VAWG board and the operational groups have representation from all key stakeholders and specialist services

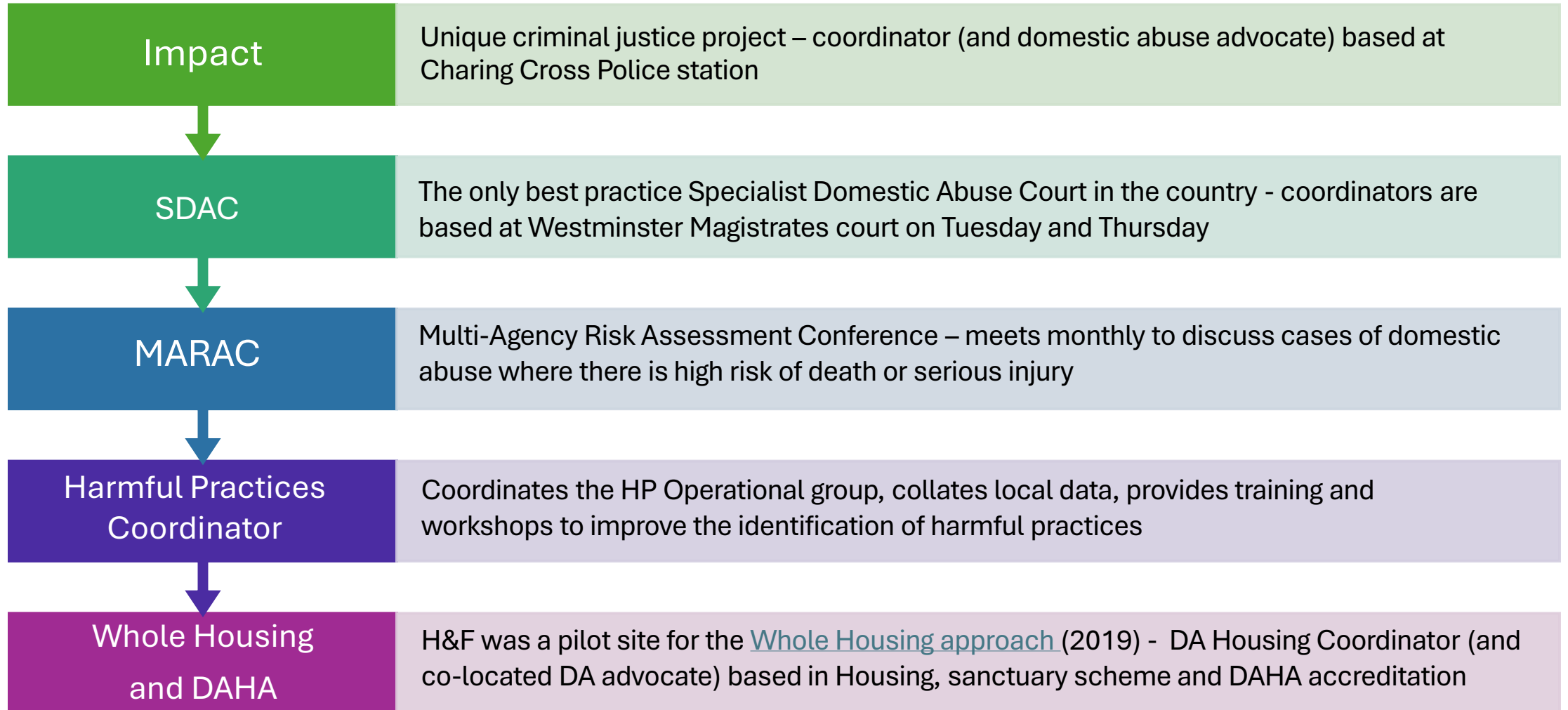
Specialist
Services

Specialist providers



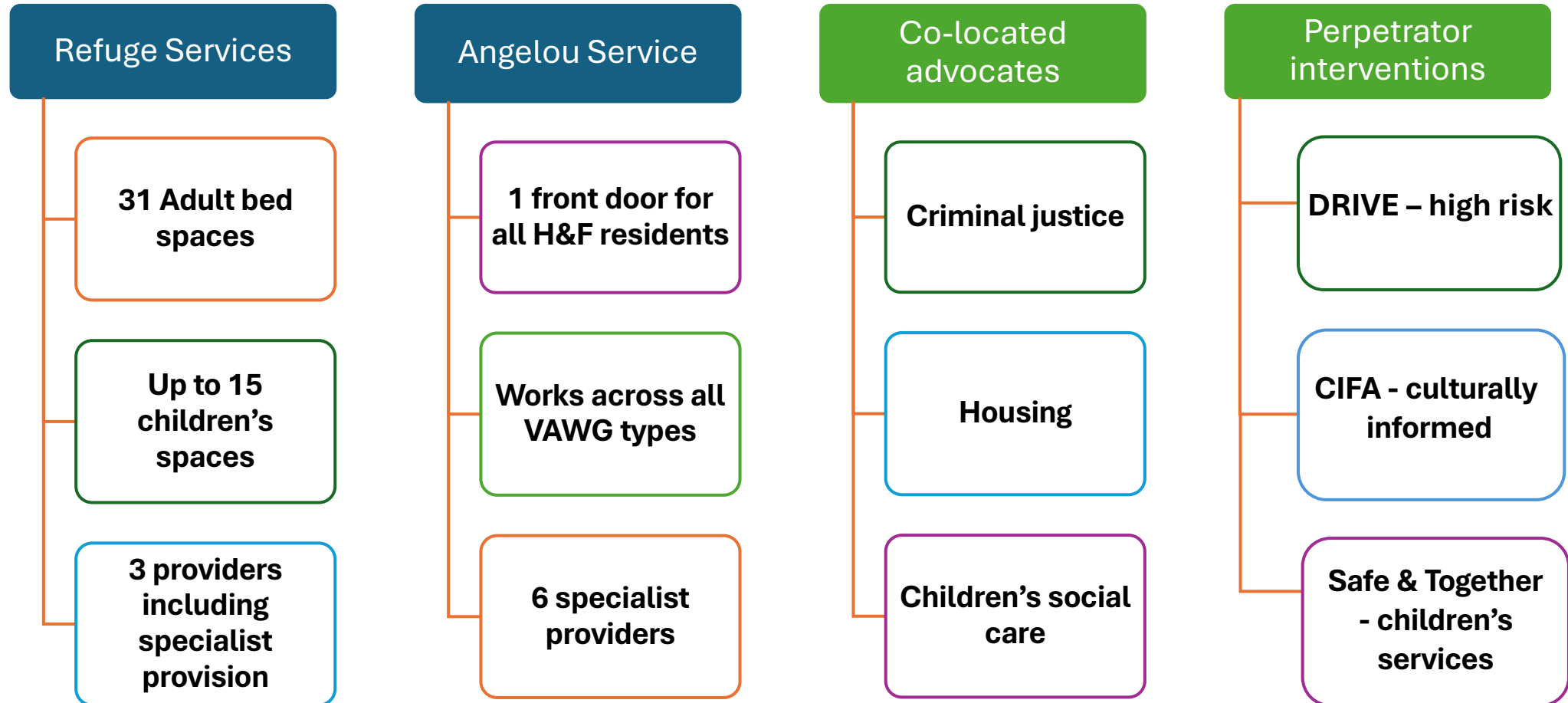
In H&F VAWG we work with a broad range of specialist services to ensure we meet the intersectional needs of survivors

Coordination Services



These coordination services support the H&F partnership to effectively deliver the CCR, enhancing service delivery

Support Services



We need dedicated resources and a variety of services to support survivors, reduce risk and hold abusers to account