

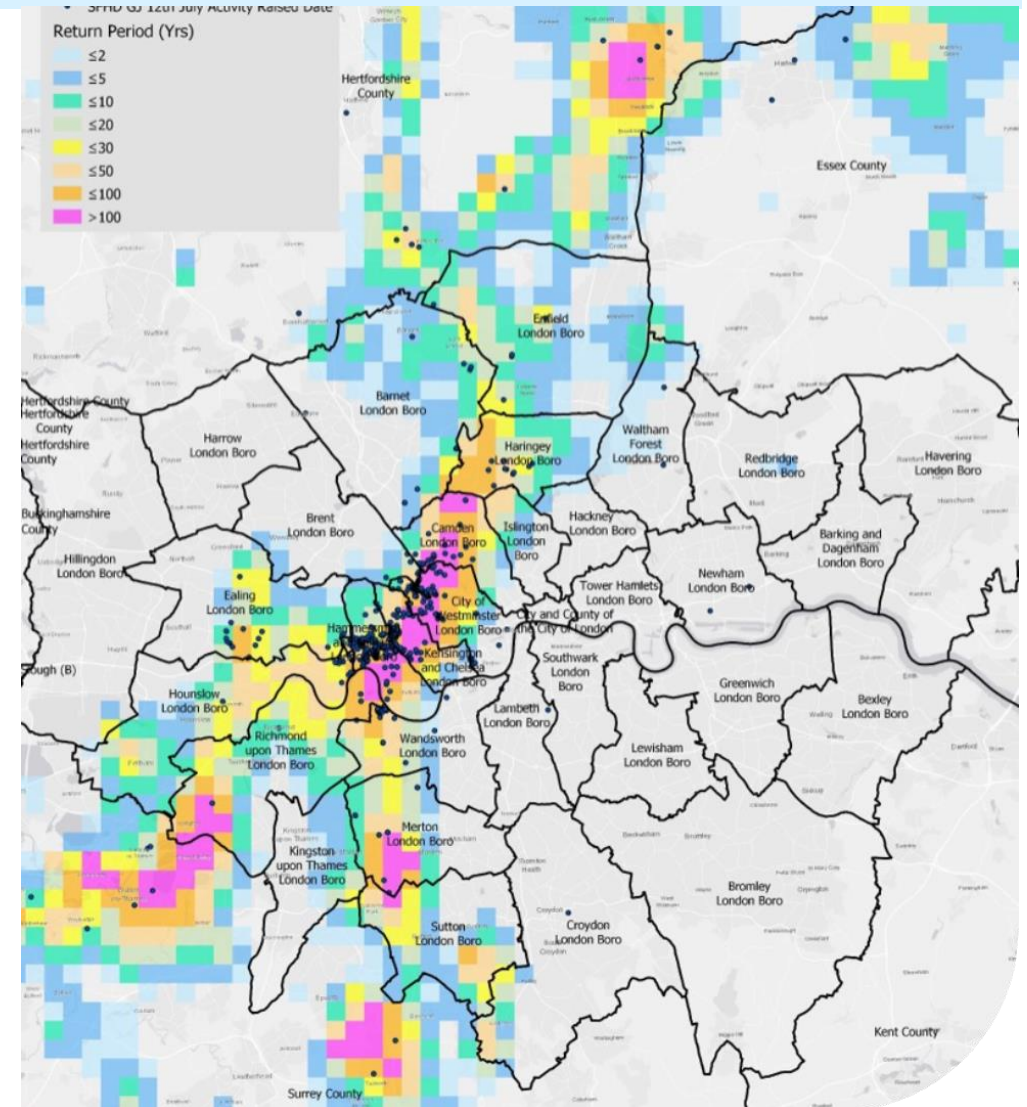


LB Hammersmith and Fulham
Climate Change and Ecology Policy and
Accountability Committee

Flooding July 2021

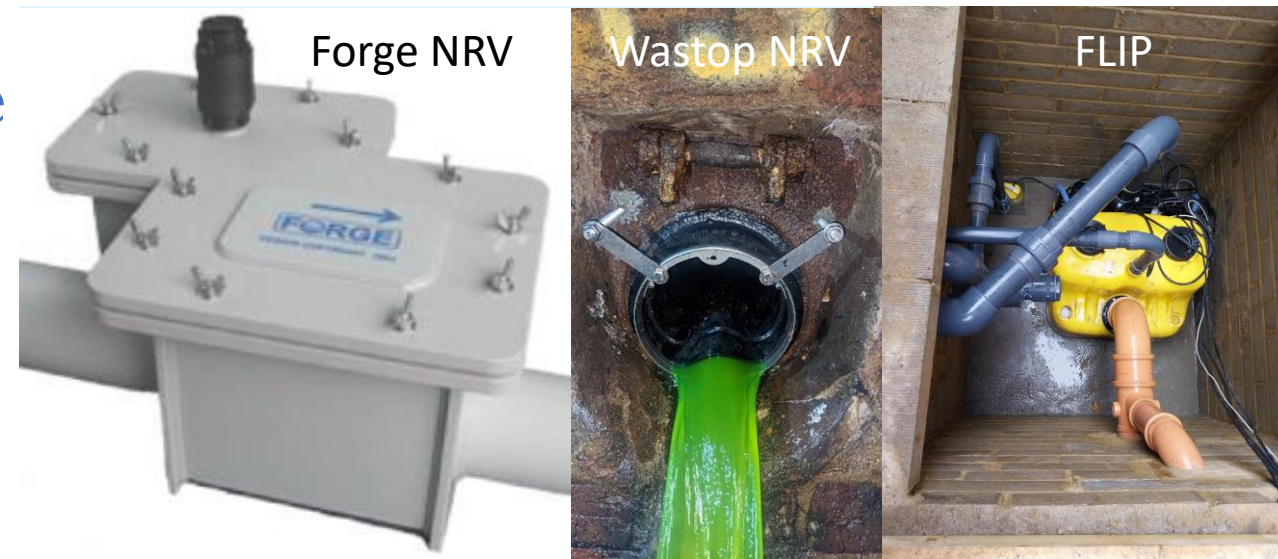
Understanding the cause and impact of flooding in 2021

- On July 12, 2021, parts of the Counter's Creek Catchment, including Hammersmith, were hit by a severe storm, with around 170% of average July rain falling in a few hours
- Over 2,000 properties and infrastructure were affected across London
- Soon after the storm, we commissioned an independent review into the impact and causes of the flooding and the long-term solutions to this risk
- It concluded that:
 - The flooding was due to the intensity of the rain, exacerbated by the tidelocking of the Thames
 - Whilst there are some relatively quick actions which can be taken, all agencies with flood-risk responsibilities need to work together to manage more rainwater on the surface.



Sewer Flooding Resilience Programme

- Following the storms in 2021, we launched the Sewer Flooding Resilience Programme on which we have spent more than £10m and committed a further £4m
- This involved us offering to survey every property we believe may have flooded in 2021 and then providing improved protection for those most at risk
- This protection involves either a non-return valve (NRV) or a FLIP
- We have also been installing Sewer Flaps in our network in appropriate locations, where we can protect multiple properties at once
- A further phase of the programme is being developed to address lower risk properties



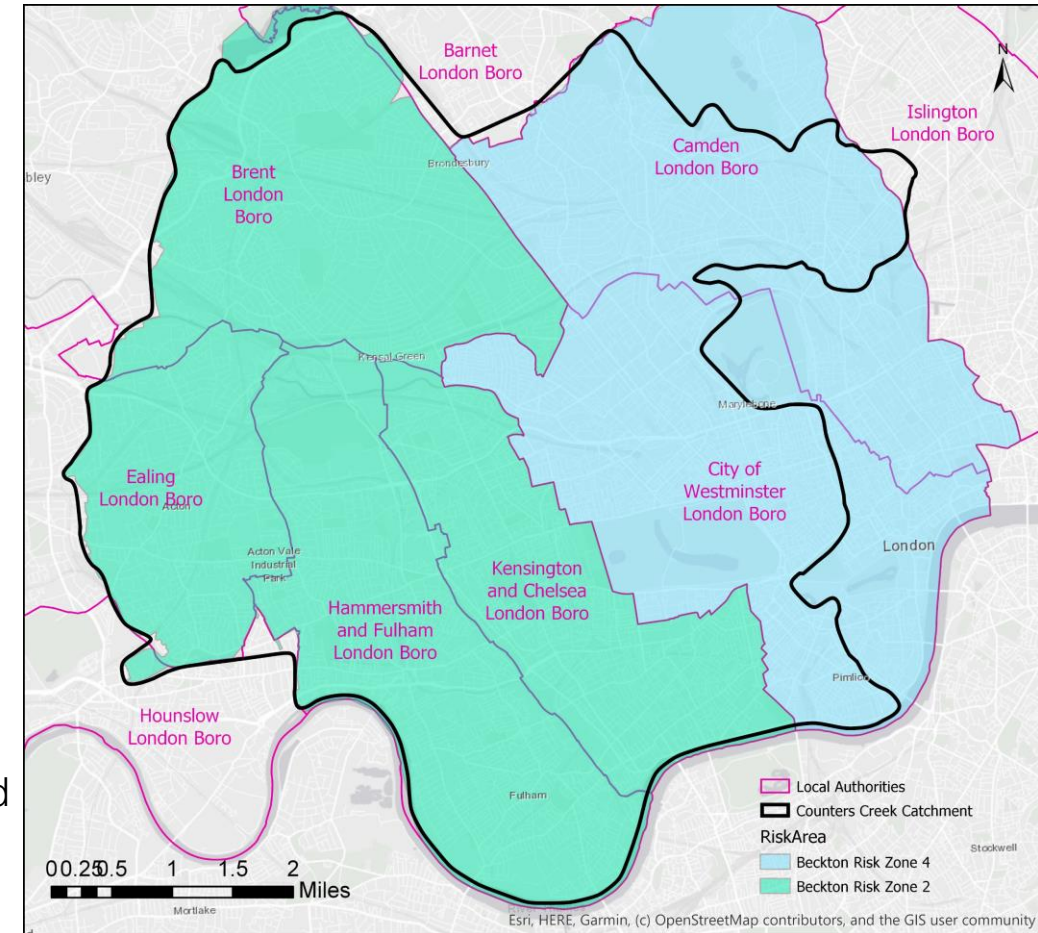
Programme stats for H&F

- Properties contacted for survey: 1,454
- Properties surveyed: 328
- NRVs/FLIPs installed to date: 10
- NRVs/FLIPs in planning/construction: 37
- Properties protected by Wastops/Sewer flaps: 148
- Properties to be addressed in next phase: 190
- **Total number of properties protected by the end of the programme in H&F: 385**

Strategy for the Counter's Creek catchment

Our long-term strategy for alleviating flood risk in Counters Creek includes:

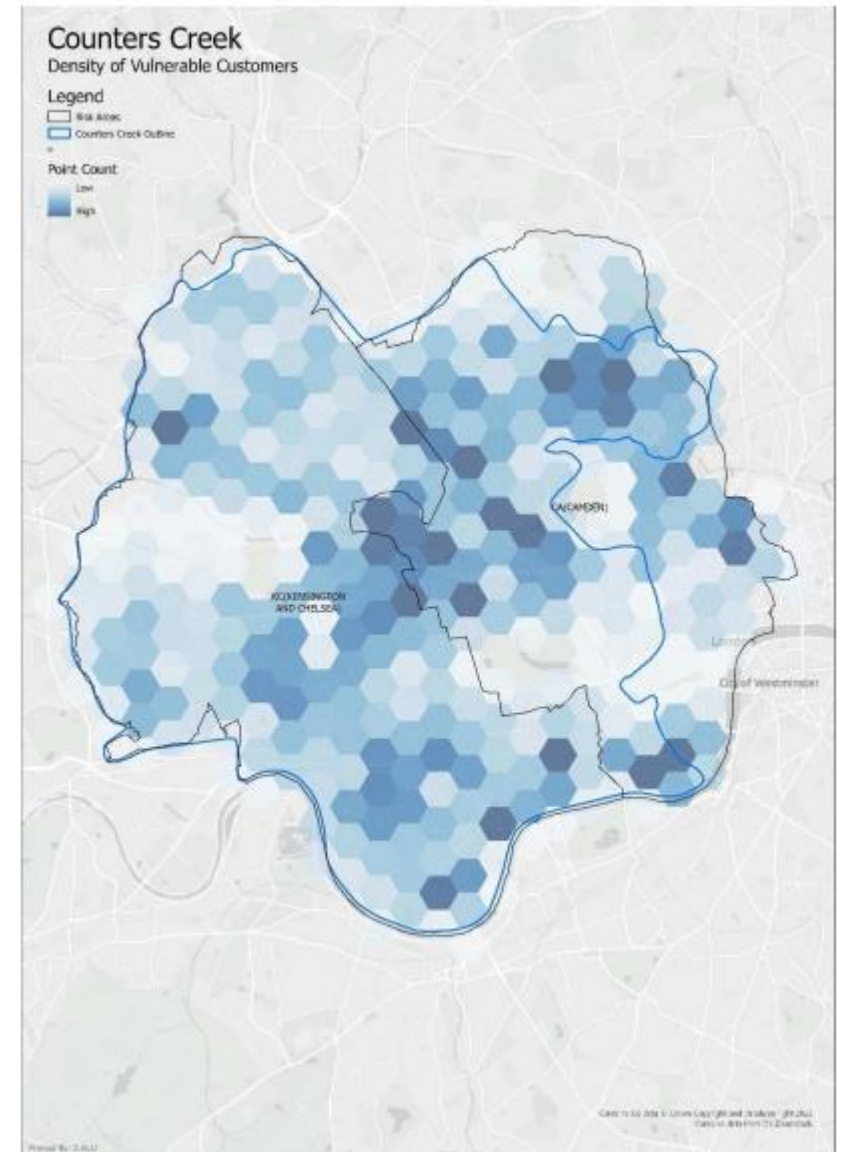
- Commissioning operation of the Thames Tideway Tunnel (TTT) in 2025
- Improving the sewer flooding resilience to the highest risk basement properties (£14m spent/committed so far)
- Investing up to £1.7bn in risk zones 2 and 4 (covering Counters Creek) by 2050 through:
 - Working with partners to install more SuDS and encourage the widespread use of rainwater butts
 - Digitising our network to optimise the use of its capacity to create a 'smart network'
 - Upsizing of sewers and installation of storm tanks in tactical locations
 - Working with partners on a plan for extreme events
- Updating our asset base so that it is reliable, resilient to climate change and able to support London's growth
- This will reduce the risk of flooding of customers to 1.5% (internal) and 3% (external) up to a 1 in 30-year storm event in any given year by 2050 and ensure 95% of properties are not at risk of a 1 in 50-year storm event
- Note all the above will be informed by the London Surface Water Strategy.



Map of the Counters Creek Catchment

London Surface Water Strategic Group

- A number of reviews into the July '21 floods identified the need for the key flood risk management agencies to work better together and to develop a London-level strategy to provide a framework for co-ordinated activity.
- The London Surface Water Strategic Group (LSWSG) was formed in Dec 2022. It has met 5 times and has repeatedly expressed its commitment to collaborative working to manage this risk.
- The LSWSG commissioned consultants to develop the strategy, which will be published in late spring/early summer this year. The strategy will:
 - Identify strategic surface water flood risk areas and the catchments that create their risk
 - Sub-divide London into its surface water catchments and propose collaborative working between these partners
 - Present London, catchment and local-level actions
 - Create an engagement programme to raise awareness and capacity to act
 - Identify new funding and financing measures
- All of these are available online <https://www.thameswater.co.uk/about-us/investing-in-our-region/london-flooding-response>



'SuDS first' approach

- Our DWMP and the 'independent' review identified the need to reduce and delay the rate and volume of rainwater reaching our combined sewers as the first step in a hierarchy of solutions
- For a decade, we have been running a Surface Water Management Programme where we have funded third parties, including boroughs, to develop and deliver SuDS projects
- By 2050, we have identified that to meet this challenge, the equivalent of 10,000 football pitches of currently impermeable land will need to be converted to reduce flood risk in London
- We are working with partners to develop the pipeline of projects to meet this target and the skills to deliver and maintain it.

