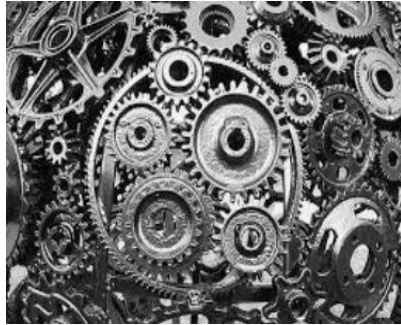


# IMPERATIVES AND DRIVERS FOR TRANSITION

*What do we want to achieve over the next 18 months?*



## **Evolving CV19 Response for some services**

*Adult Social Care  
Children's services  
Rough sleepers ,  
PPE  
Contact tracing*

## **Financial resilience & Innovation**

*Reframing services and  
budgets at pace  
Service innovation and  
learning*

## **Rebuilding our Economy**

*Business resilience  
Rebooting the economy  
Meeting the new  
challenge for employment  
and jobs*

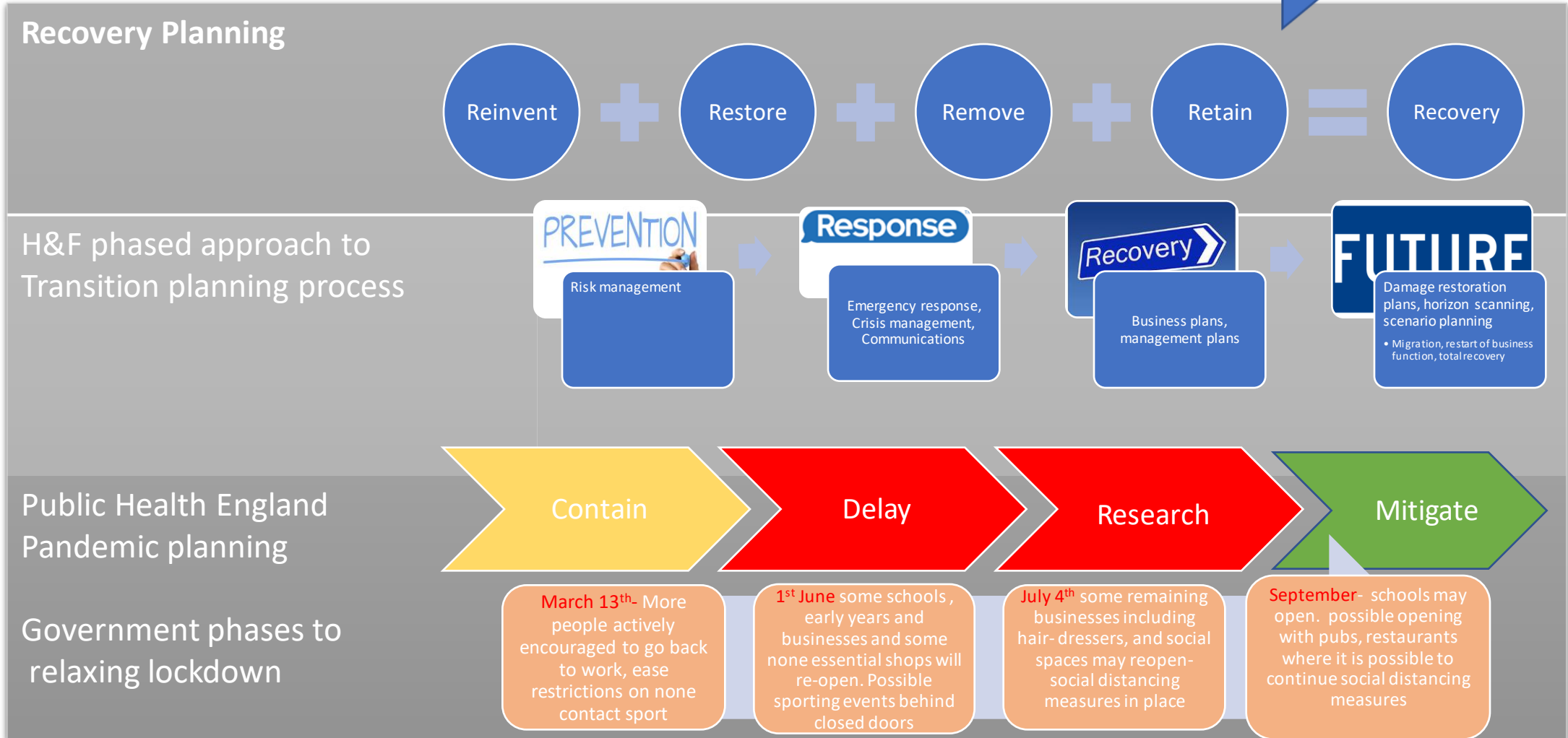
## **Co-production & collaboration** *Working with partners and stakeholders Bigger role in co- production and delivery with key collaborators in Vol orgs*

### Key Drivers

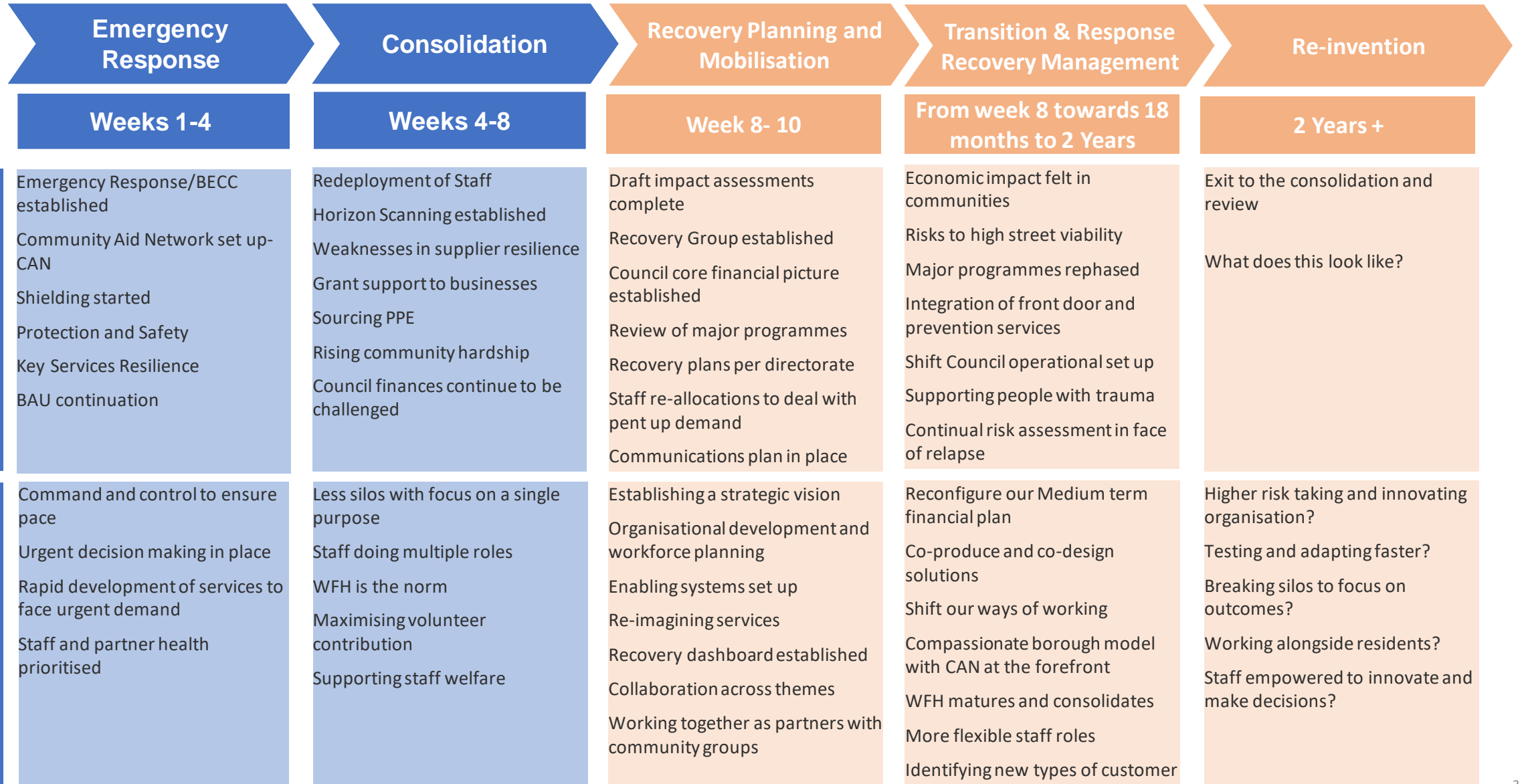
\*A new financial strategy \* Political Priorities\* Continued Rapid adaptation of Services (Restore, Retain, Remove, Reinvent)  
Our role as employer, public health lead, local authority and compassionate Council

# CURRENT VIEW OF OVERALL TIME LINE 1<sup>st</sup> PHASE TRANSITION

May 2020- November 2020 dependant on wave2



# RE-INVENTION STARTS NOW



# Strategic areas to focus on

Vulnerable  
clients we  
support

Wider  
community

Council Vision,  
Values, Brand

Finance  
Funding, impact

Workforce &  
Workplace

Customer  
Experience

Stakeholders &  
Providers

Regulation  
What has to be  
done

# Leadership, governance and delivery system

**Time limited**

*Info Pack for Boards to include:*

- Risk Register
- Activity dashboard
- SLT financial resilience & recovery tests
- Horizon scanning

