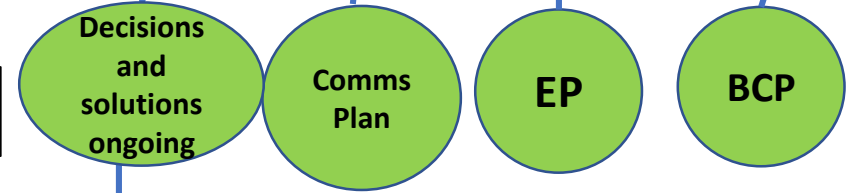
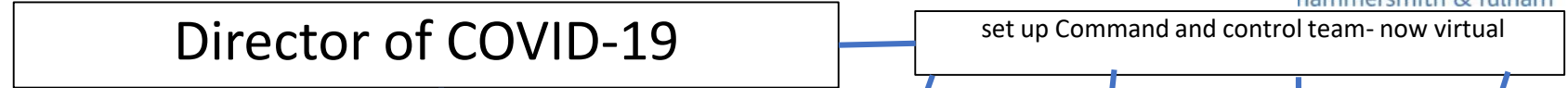


**Aim: To be a resilient and transparent council leading the borough response to C19** Version 3



Event/meetings  
Restart programme



- ✓ Vulnerable People
- ✓ Community resilience
- ✓ Volunteer planning including 3<sup>rd</sup> sector
- ✓ Risk Management
- ✓ Food
- ✓ Faith sector
- ✓ Personal Protective Equipment

- ✓ Events – control and advice
- ✓ Remote working
- ✓ HR processes and monitoring
- ✓ Advice and guidance
- ✓ Risk assessment
- ✓ Upskilling plan
- ✓ Workforce mapping
- ✓ Staff accommodation

- ✓ Schools
- Businesses
- ✓ 3<sup>rd</sup> sector
- Asset Plan
- ✓ Borough mutual aid plan
- ✓ Transport
- Economic resilience plan

**Enablers**

- ✓ Business Intelligence and analytics
- ✓ Technology/Digital

- ✓ Finance and Procurement
- ✓ Workforce skill mix

- Asset management
- ✓ Communications

# H&F phased response to COVID 19

